

Component specification**Buzzer****BPI4024NRMA**Index **A**

PBWE

1. General

Operating temperature: -20°C to +60°C component weight [g]: 52

Storage temperature: -20°C to +60°C

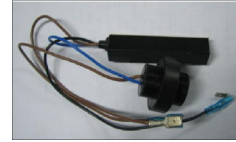
Contact: WIRE housing color: black

Packageing: box IP rating:

ESD conform

RoHs conform: yes

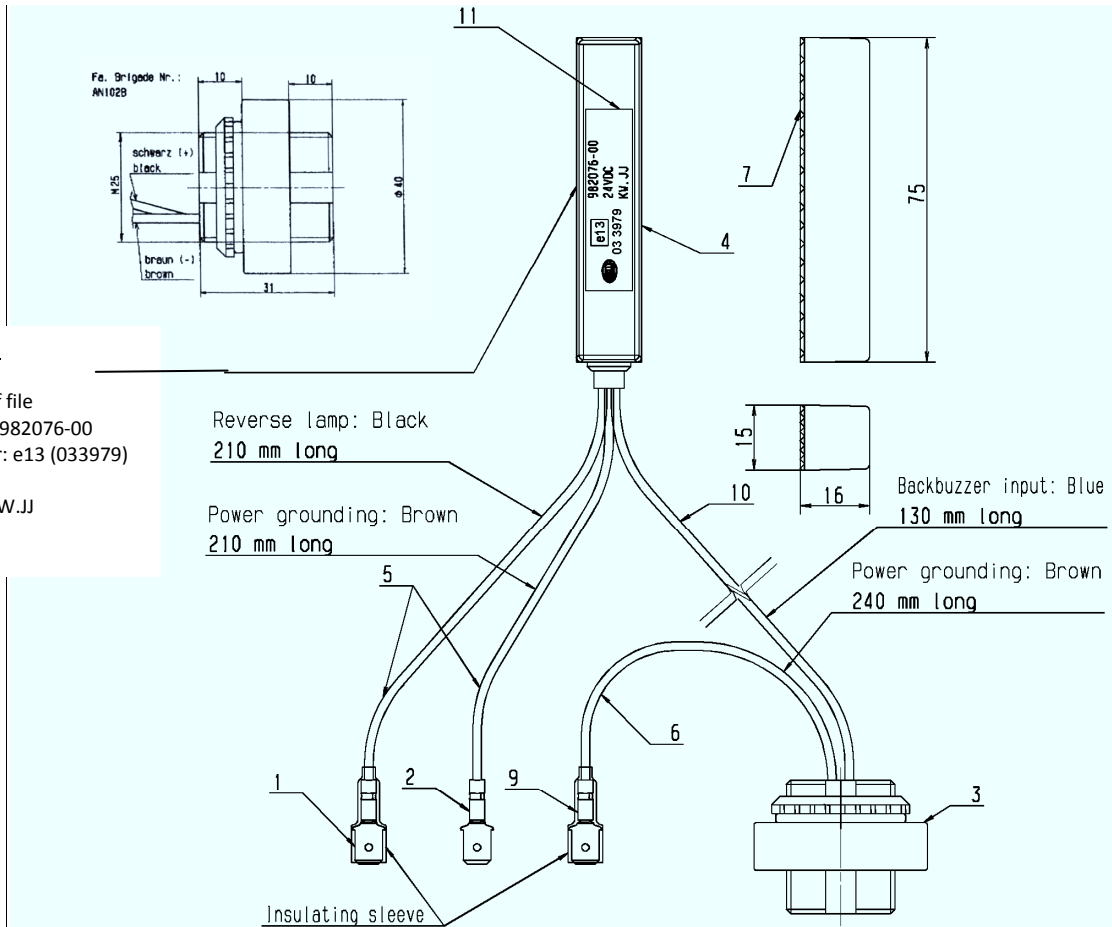
Remark: White dot on backside, SPL1: Normal operation. SPL2: Noise reduction mode
 Difference SPL1-SPL2: The difference between SPL1 and SPL2 reduction must be minimal 7dB
 Sound reduction double-engage time: 5sec. +2s/-1s

**2. Electrical and acoustical specification**

Description	Condition	Value
Rated voltage [Vdc]		24
Operating voltage [Vdc]		18 - 32
SPL [dBA]	L1 = (93dBA/24V/1m), (73dBA/24V/7.5m) SPL2 = (85dBA/24V/1m), (55dBA/24V/7.5m)	SPL1 = 93, SPL2 = 85
Current consumption [mA]		≤ 200
Tone		pulse

GREWUS		dimensions without tolerance:	scale:	
Designed by: Ralf Hinnerichs	12.10.2007	part number: BPI4024NRMA	index:	Last update:
Released by: Ralf Hinnerichs	22.09.2011		A	22.09.2011
drawing number: 393673741		Buzzer	Page 1 of 2	

3. Component drawing



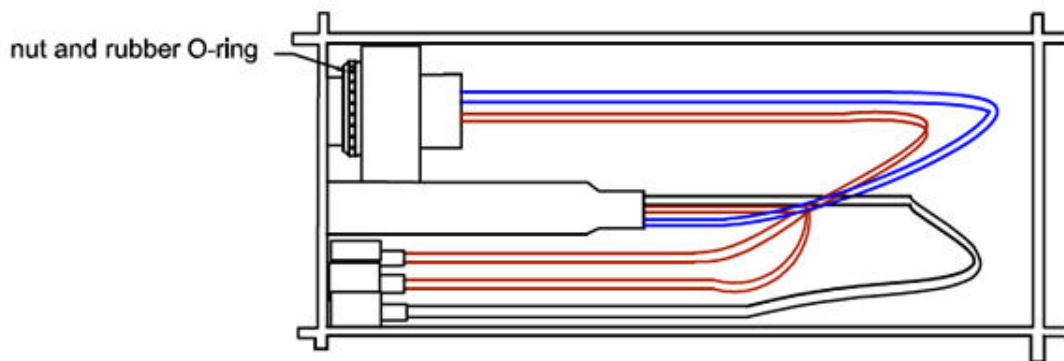
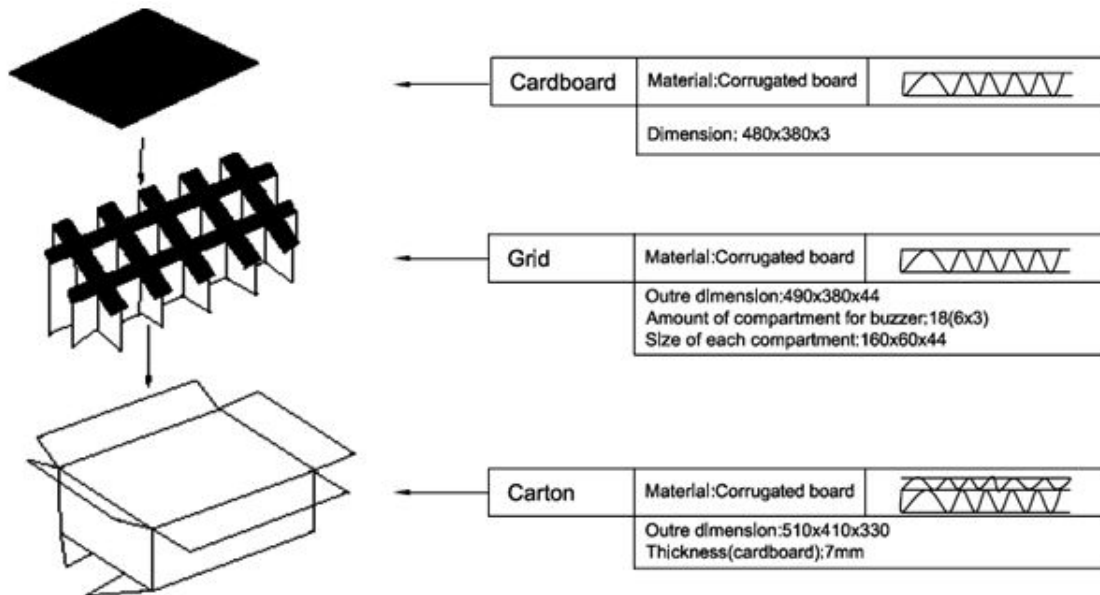
Details on housing:

Hella logo: logo.dxf file
 Hella Partnumber: 982076-00
 E-certificat number: e13 (033979)
 Voltage: 24VDC
 Production date: KW.JJ

11	Label	.	.	.	1		
10	Wire 130 mm long	.	.	blue	1		
9	Individual plug	.	.	See power ground connector of current Buzzer (341 467-80 Hella Part-Nr)	1		
8	Insulating sleeve	.	.	.	2		
7	3M double side label	.	.	.	1		
6	Wire 240 mm long	.	.	brown	1		
5	Wire 210 mm long	.	.	black, brown	3		
4	NR-Modul	.	.	.	1		
3	Summer	.	.	.	1		
2	Individual plug	.	.	AMP 150645-3 or equal	1		
1	Individual plug	.	.	AMP 9-160463-2 or equal	1		
Nr. No.	Benennung	Title	Part Nr.	Part Nr	Bemerkung	Note	Stck. Piece

GREWUS			Dimensions without tolerance		Scale	
Designed by	Hinnerichs	12.10.2007	Part number BPI4024NRMA		Index	Date
Released by	Hinnerichs	22.09.2011			A	22.09.2011
Drawing number 393673741					Page	2 of 3

4. Packaging drawing



Quantity: 108 pieces, 6 grids with 18 parts each, place only one buzzer in each compartement, place cardboard between grids

GREWUS			Dimensions without tolerance	Scale	
Designed by	Hinnerichs	12.10.2007	Part number BPI4024NRMA	Index	Date
Released by	Hinnerichs	22.09.2011		A	22.09.2011
Drawing number	393673741			Page	3 of 3