

Component specification

BME1312S-02A

Index **A**

Buzzer

MBWOE

1. General

operating temperature:	-30°C to +105°C	component weight [g]:	2
storage temperature:	-30°C to +105°C	housing color:	grey
contact:	SMD	IP rating:	
packageing:	tor	RoHs conform:	yes
ESD conform	<input checked="" type="checkbox"/>		
remark:			



2. Electrical and acoustical specification

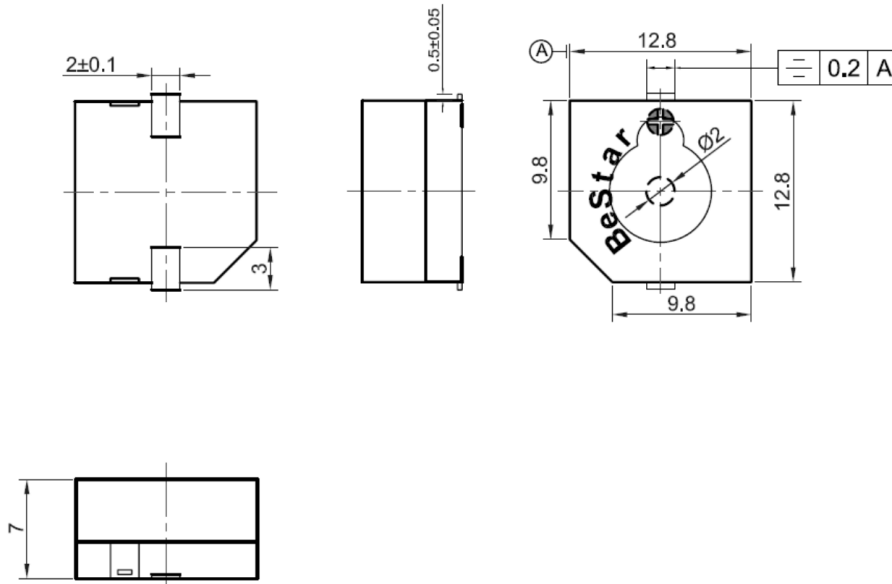
DC resistance [Ω]		120 \pm 12
Impedance [Ω]	2400 Hz, sine wave 60 μ A	240
Resonance frequency [Hz]		2400
Rated voltage [V]	V_{op}	12
Operating voltage [V]	V_{op}	8 - 16
SPL [dBA]:	in 10 cm, at 12 V op, 2400 Hz, square wave 50% duty cycle	\geq 85
Current consumption [mA]	12 V op, 2400 Hz, square wave 50% duty cycle	\leq 40

Remark:

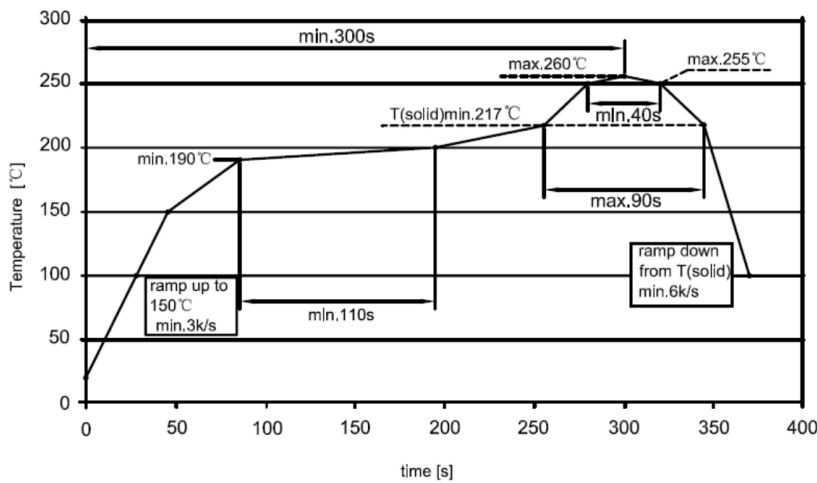
Frequency curve

GREWUS		dimensions without tolerance:	\pm 0.3	scale:	
Designed by:	Ralf Hinnerichs	11.03.2009	part number: BME1312S-02A	index:	Date:
Released by:	Ralf Hinnerichs	11.03.2009		A	11.03.2009
drawing number: 398835836			Buzzer	Page 1 of 3	

3. Component drawing

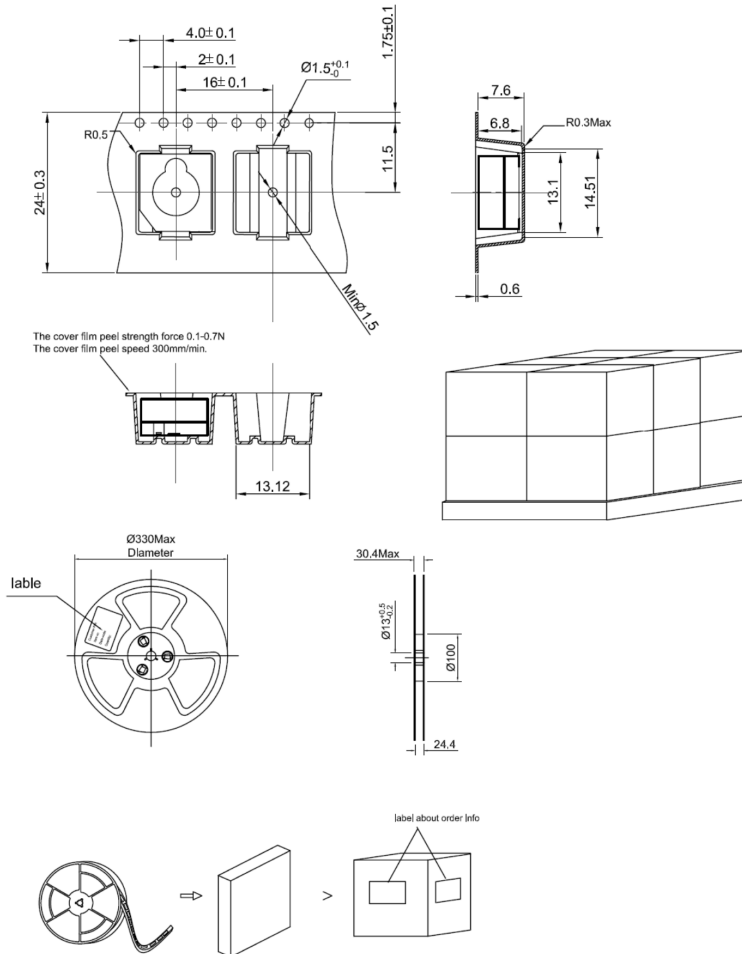


Temperature profile for a lead-free reflow process



GREWUS		dimensions without tolerance: ± 0.3	scale:	
Designed by: Ralf Hinnerichs	11.03.2009	part number:	index:	Date:
Released by: Ralf Hinnerichs	11.03.2009	BME1312S-02A	A	11.03.2009
drawing number: 398835836		Buzzer		Page 2 of 3

4. Packageing drawing



Carton

Size: 38 x 28 x 37 cm

Smalest unit: reel

Quantity: 2500

quantity smalest unit: 500 / reel

Weight:

further packageing information: 5 reels / carton

GREWUS		dimensions without tolerance: ± 0.3	scale:	
Designed by: Ralf Hinnerichs	11.03.2009	part number: BME1312S-02A	index:	Date:
Released by: Ralf Hinnerichs	11.03.2009		A	11.03.2009
drawing number: 398835836		Buzzer		Page 3 of 3