

Content

- 1. General
- 2. Electrical and acoustical specification
- 3. Test assembly
- 4. Frequency curve
- 5. Total Harmonic Distortion Curve
- 6. Impedance Curve
- 7. Drawing
- 8. Reliability tests
- 9. Packaging



1. General

Operating temperature: -40°C to +90°C component weight [g]: 6,5
 Storage temperature: -40°C to +90°C
 Contact: Spring housing color:
 Packageing: tray IP rating:
 ESD conform
 RoHs conform: yes
 Remark:

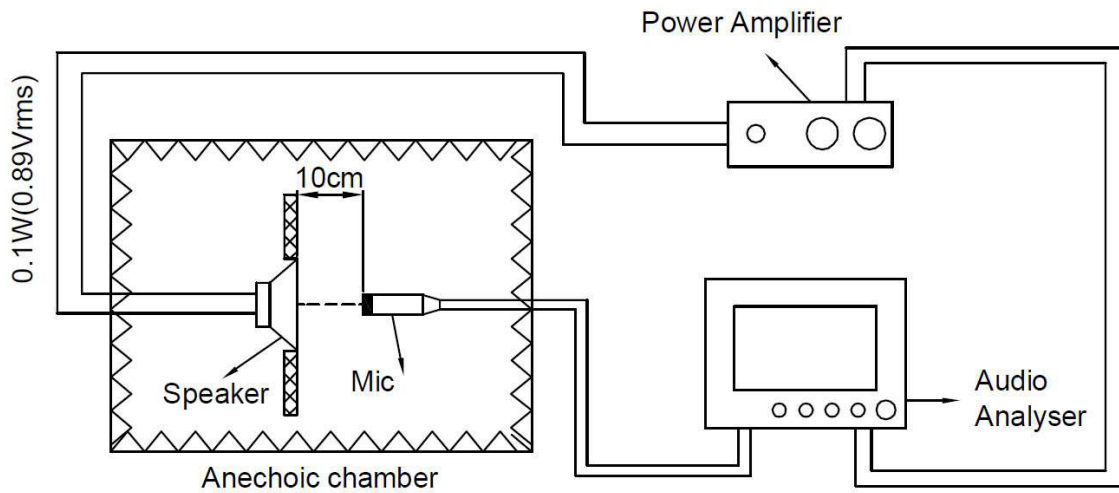
2. Electrical and acoustical specification

Description	Condition	Value
Impedance Z [Ω]	at 1kHz	50 ± 15%
Rated power [W]	3.87 Vrms	0.3
Maximum power [W]	5 Vrms	0.5
Resonance frequency [Hz]		450 ± 20%
Frequency range [Hz]		450 - 10.000
SPL [dB]	0.3W / 0.5m / at 1KHz	85 ± 3
THD [%]	at 1KHz / 0.5W	≤ 5
Buzz & rattle	Must be normal at sine wave 3.87 Vrms	
Polarity	Positive voltage to (+), Diaphragm moves forward	

Transmittal, reproduction and / or editing of this documents as well as utilization of its contents and communication thereof to others without express authorization are prohibited. Offenders will be held liable for payment of damages. All rights created by patent grant or registration of a utility model or design patent are reserved.

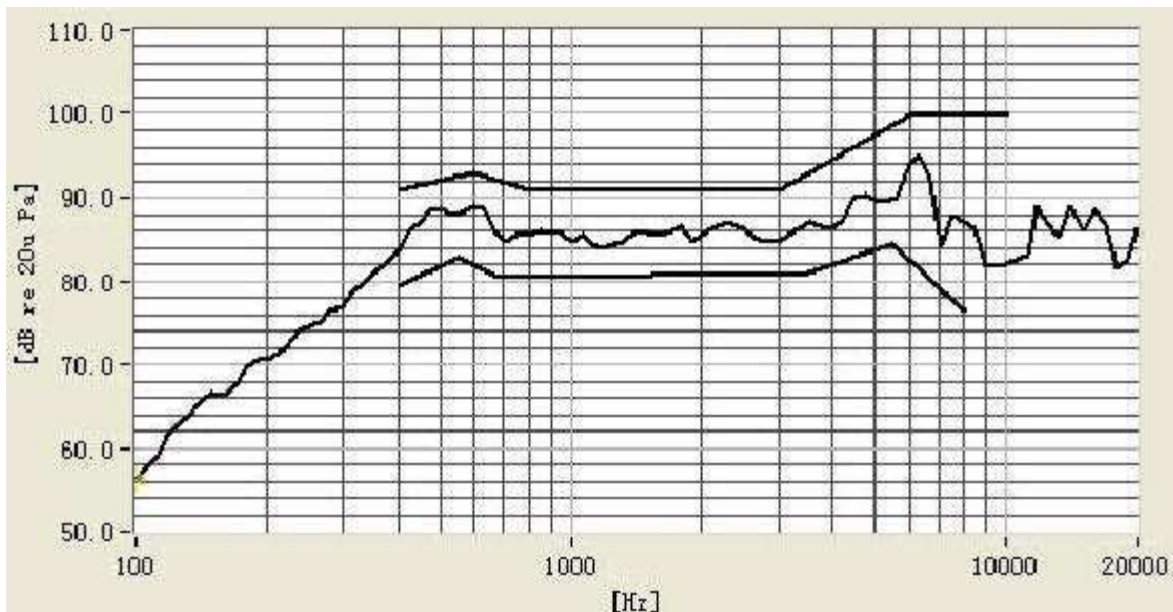
GREWUS		dimensions without tolerance:	scale:	
Designed by: Ralf Hinnerichs	14.02.2013	part number: SO3650F-01A	index:	Last update:
Released by: Ralf Hinnerichs	14.02.2013		A	14.02.2013
drawing number: 413196590		Loudspeaker	Page 1 of 6	

3. Test assembly



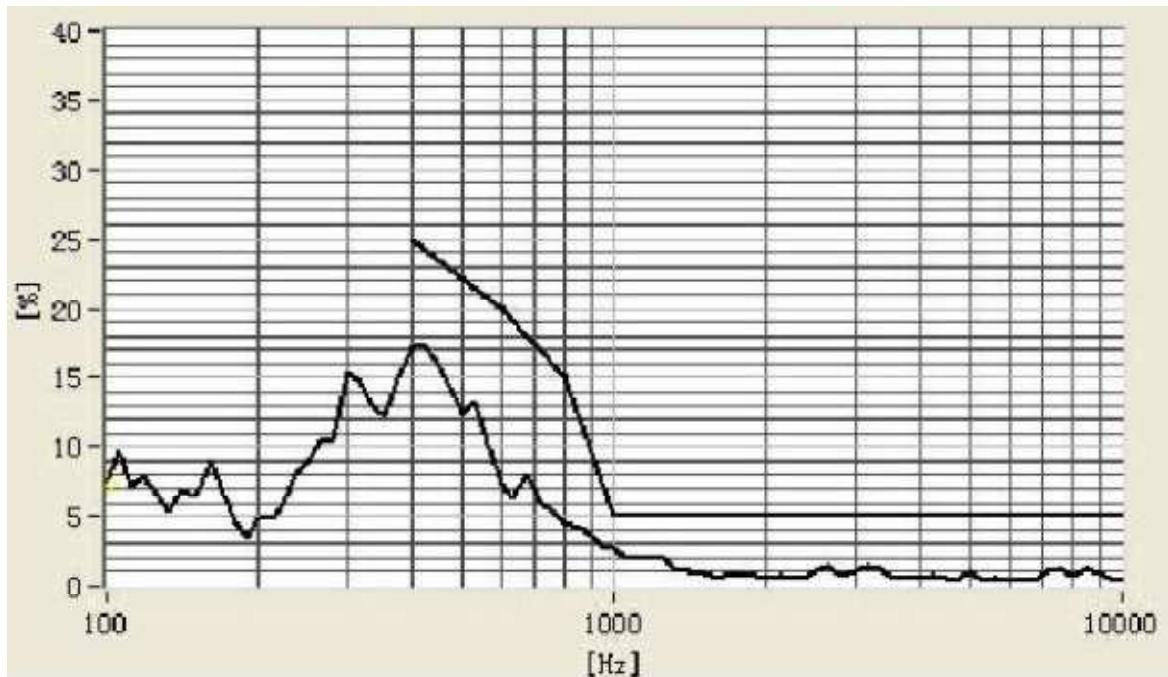
4. Frequency curve

Frequency Response Magn 0 dB re 20.00 μ Pa/V 1/24Oct

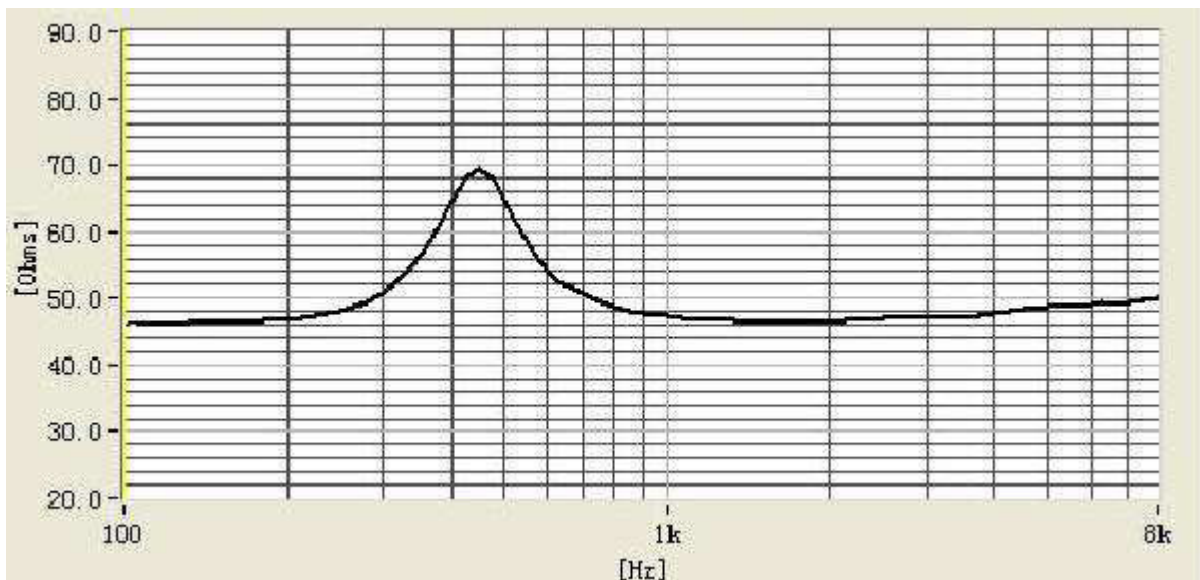


GREWUS			Dimensions without tolerance	± 0.3	Scale
Designed by	Hinnerichs	14.02.2013	Part number		Index
Released by	Hinnerichs	14.02.2013	SO3650F-01A		Date
Drawing number	413196590			Page	2 of 6

5. Total Harmonic Distortion Curve (only for reference)



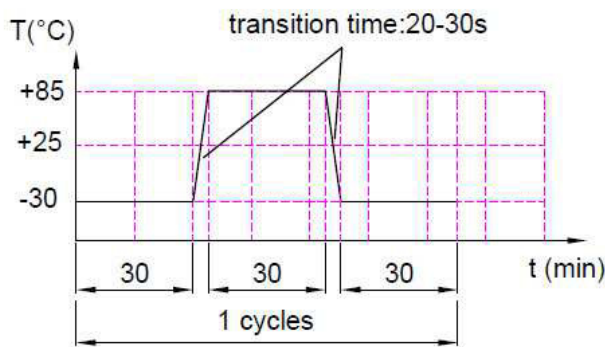
6. Impedance Curve (only for reference)



GREWUS			Dimensions without tolerance	± 0.3	Scale
Designed by	Hinnerichs	14.02.2013	Part number		Index
Released by	Hinnerichs	14.02.2013	SO3650F-01A		Date
Drawing number	413196590			Page	3 of 6

8. Reliability tests

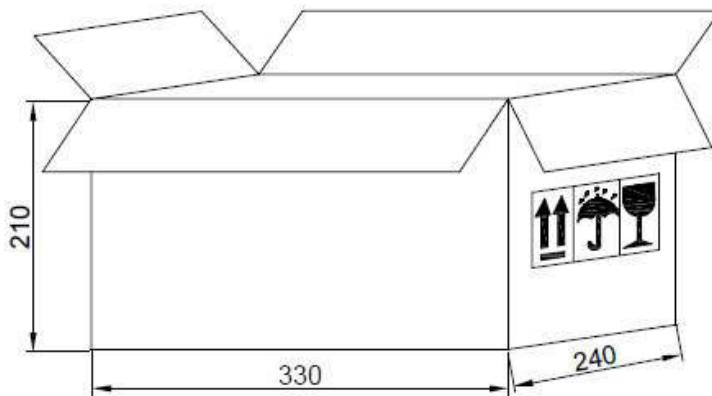
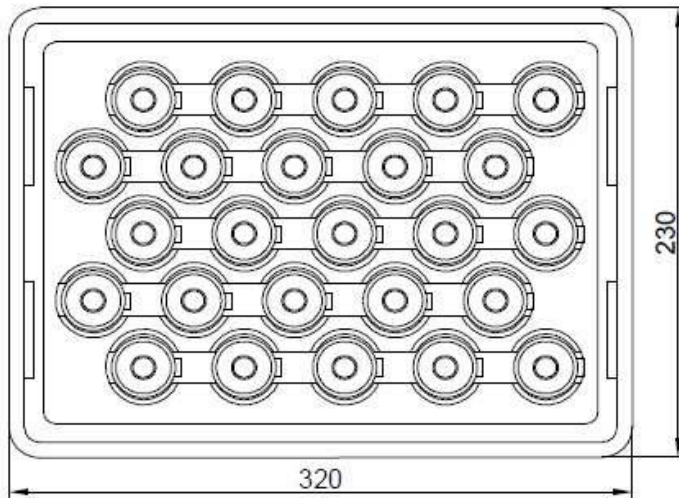
Load Test	
Power (Nom)	0.3W(sine wave)
Duration	200hrs
High Temperature Test	
Temperature	+85±3°C
Duration	200hrs
Low Temperature Test	
Temperature	-40±3°C
Duration	200hrs
Damp Heat	
Temperature	40±3°C
Relative Humidity	90%-95%RH
Duration	200hrs
Temperature Cycle Test	
Cycles	10



Drop Test	
Height	1.5m
Drop face	thick board (20mm)
Times	18 (three times in each durement)

GREWUS			Dimensions without tolerance ± 0.3	Scale	
Designed by	Hinnerichs	14.02.2013	Part number SO3650F-01A	Index	Date
Released by	Hinnerichs	14.02.2013		A	14.02.2013
Drawing number 413196590			Page 5 of 6		

9. Packaging



Remark:
 25 pcs per tray
 Total 250pcs per carton
 Size: 330*240*210mm
 N.W 1.65KG G.W 2.5KG

GREWUS			Dimensions without tolerance	± 0.3	Scale
Designed by	Hinnerichs	14.02.2013	Part number	SO3650F-01A	Index
Released by	Hinnerichs	14.02.2013			A
Drawing number			413196590		Page 6 of 6